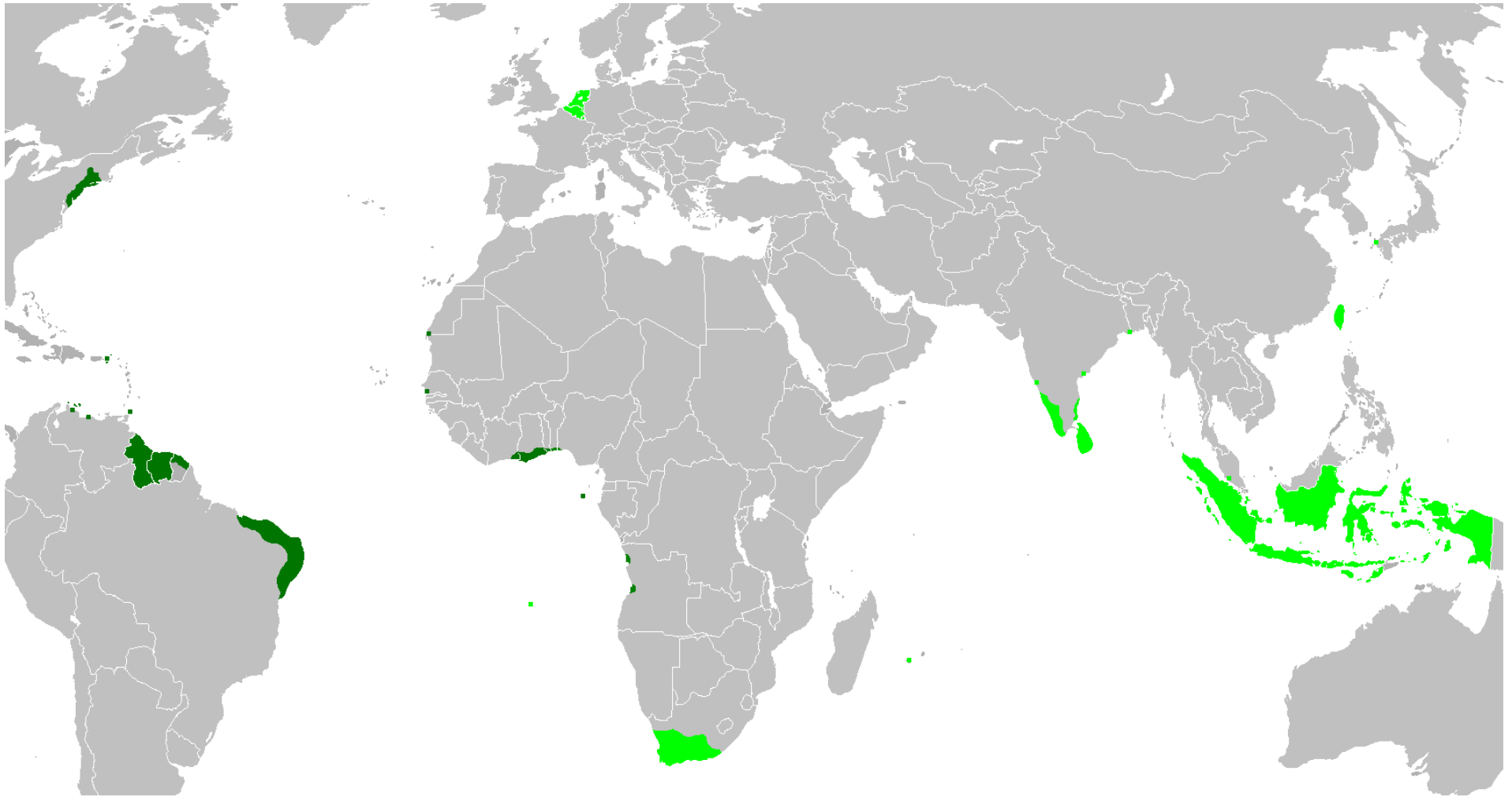


# Dutch Colonial Architecture

## Types of Settlements

1. Forts
2. Towns
3. Patroonships





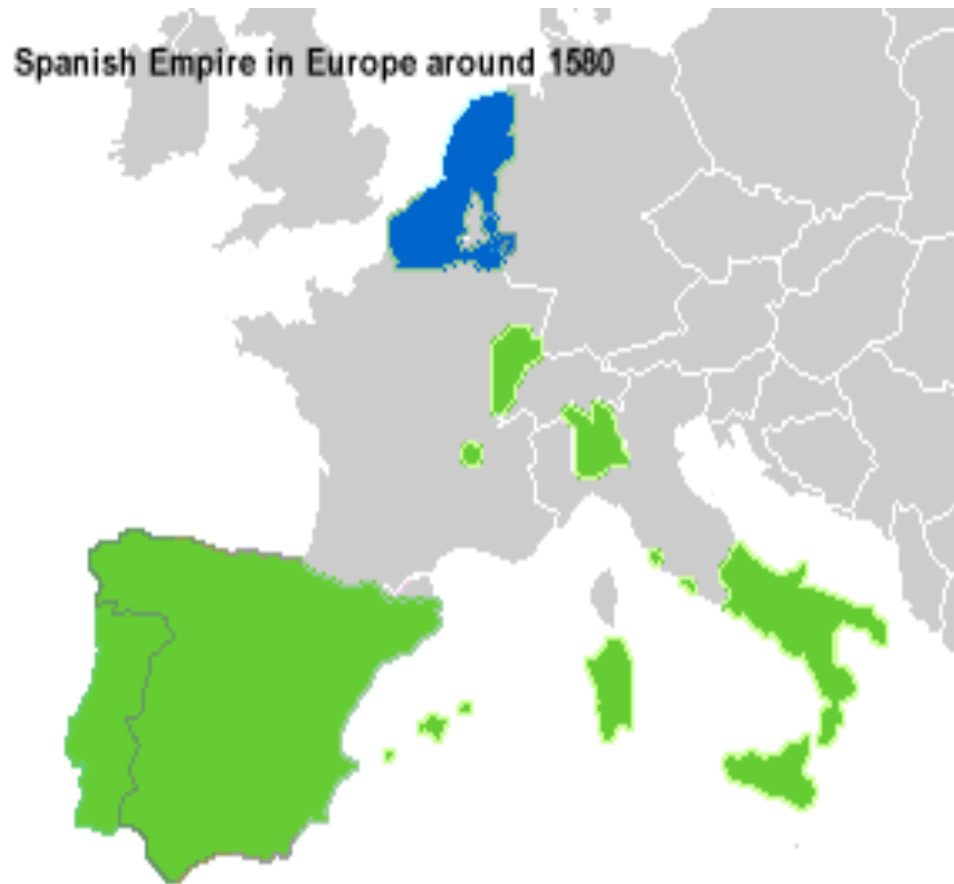
## Dutch Empire: 1543 – 1975

## Corporate Colonialism

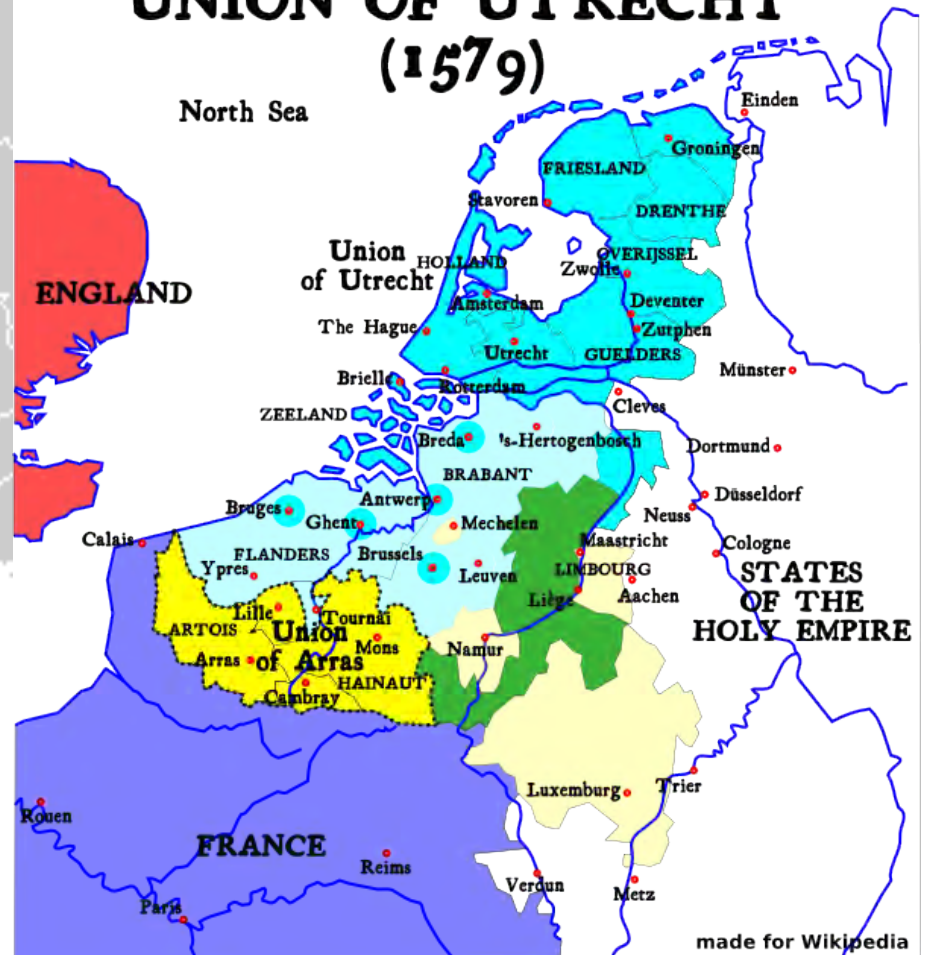
**Light Green:** Territories administered by the Dutch East India Company, 1602 - 1800

**Dark Green:** Territories administered by the Dutch West India Company, 1621 - 1791





## SPANISH NETHERLANDS UNION OF UTRECHT (1579)



Spanish Empire 1580, as inherited by Charles V

Northern Dutch Provinces united in opposition to Spain in 1579 (light blue). Southern Dutch Provinces remain loyal to Spain, but joined in 1571



New Netherlands  
1613 - 1674







## Forts

New Amsterdam,  
Founded 1625





NIEUW AMSTERDAM OFTE NIEUW IORX OPT' TREYLAND MAN

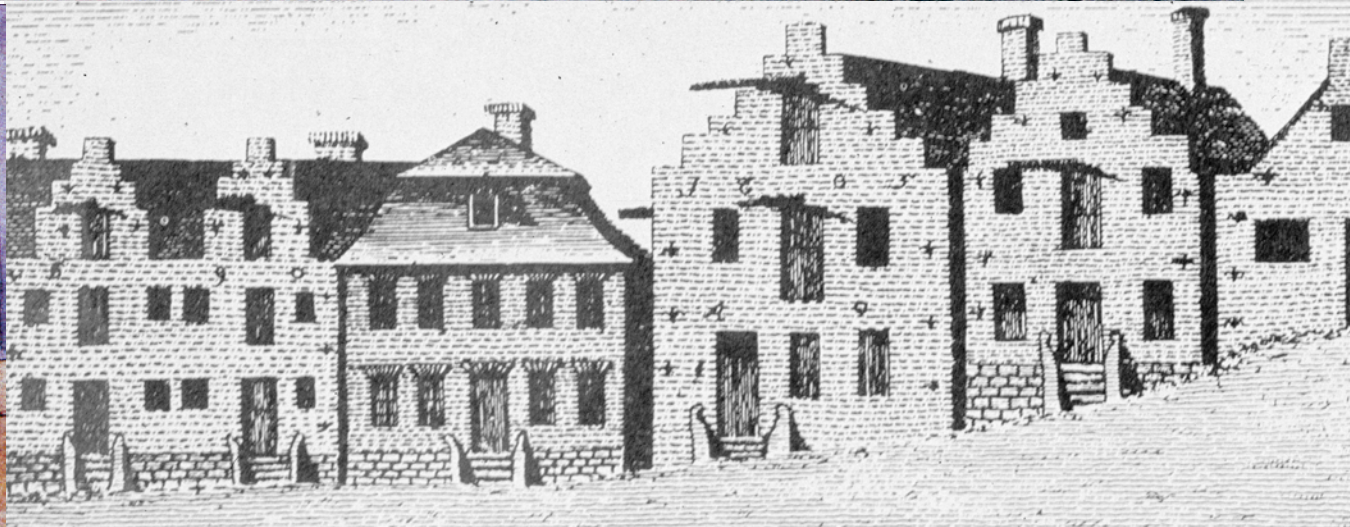




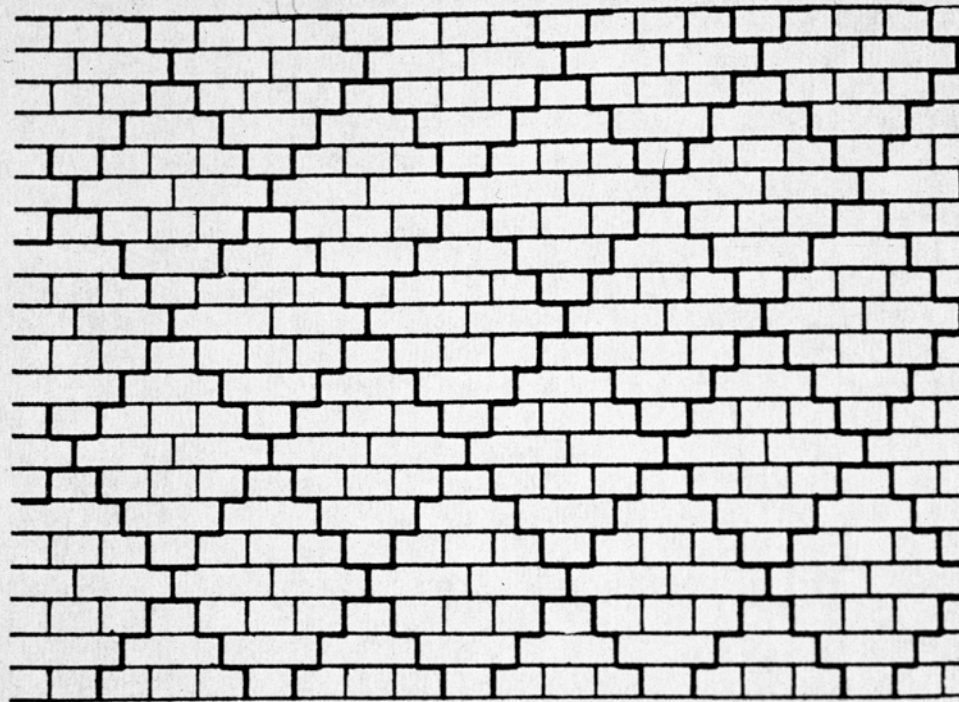
## Towns

Characteristics of Dutch urban settlement:

1. Corners built up first
2. Gable end to street
3. Tall, narrow elevations
4. Stepped Gable
5. Brick facings

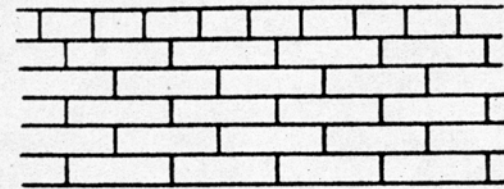




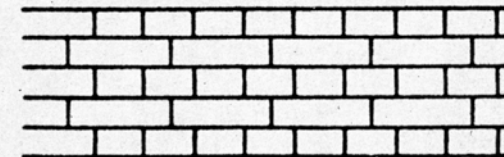


DUTCH CROSS BOND

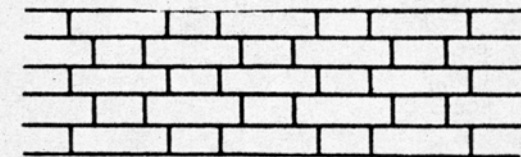
75. Dutch-cross-bond brickwork (Philip White)



COMMON



ENGLISH



FLEMISH

76. The three chief



### Brick Bonds:

1. Common
2. English
3. Flemish
4. Dutch Cross

### Glazed Headers

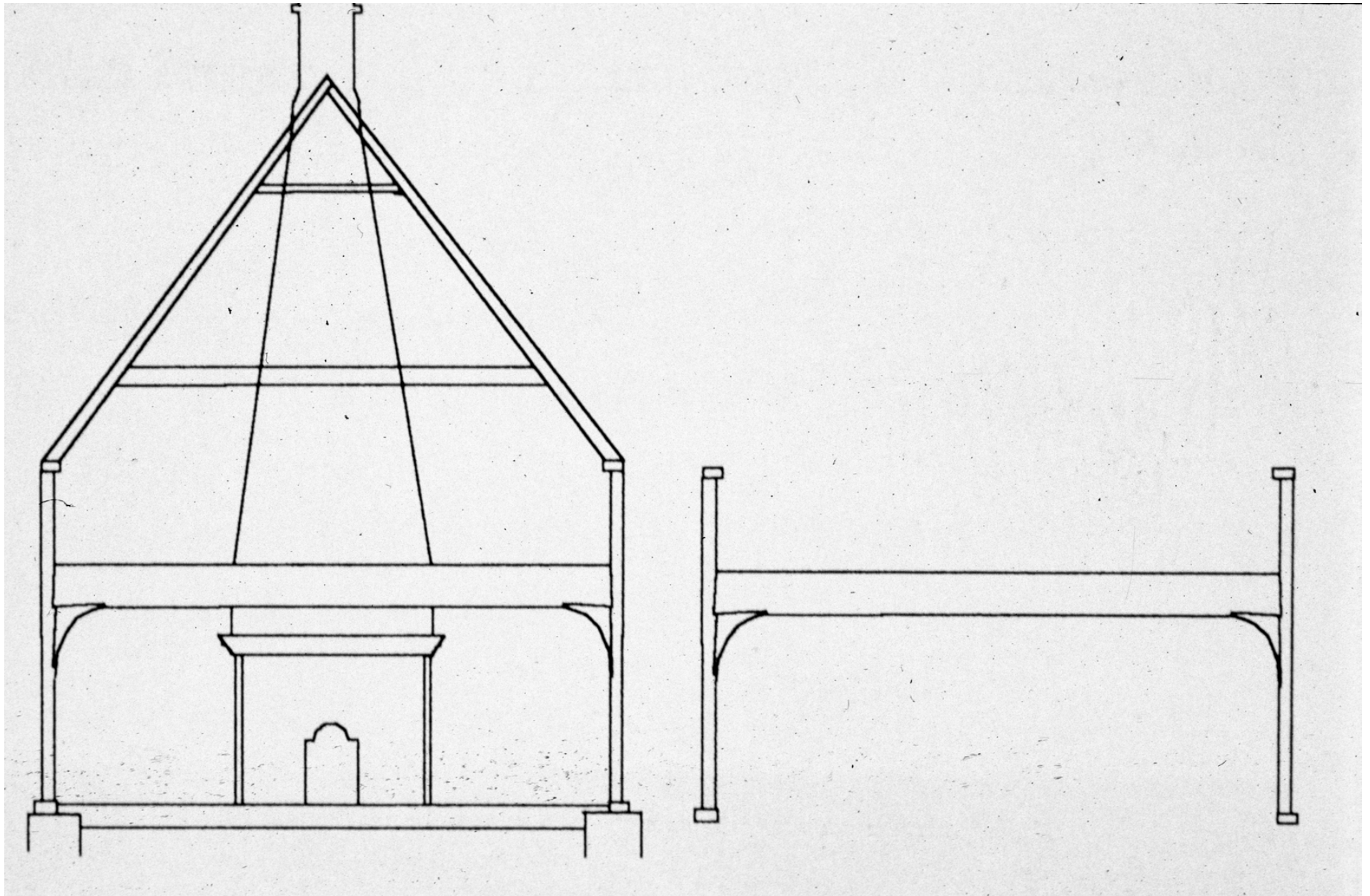






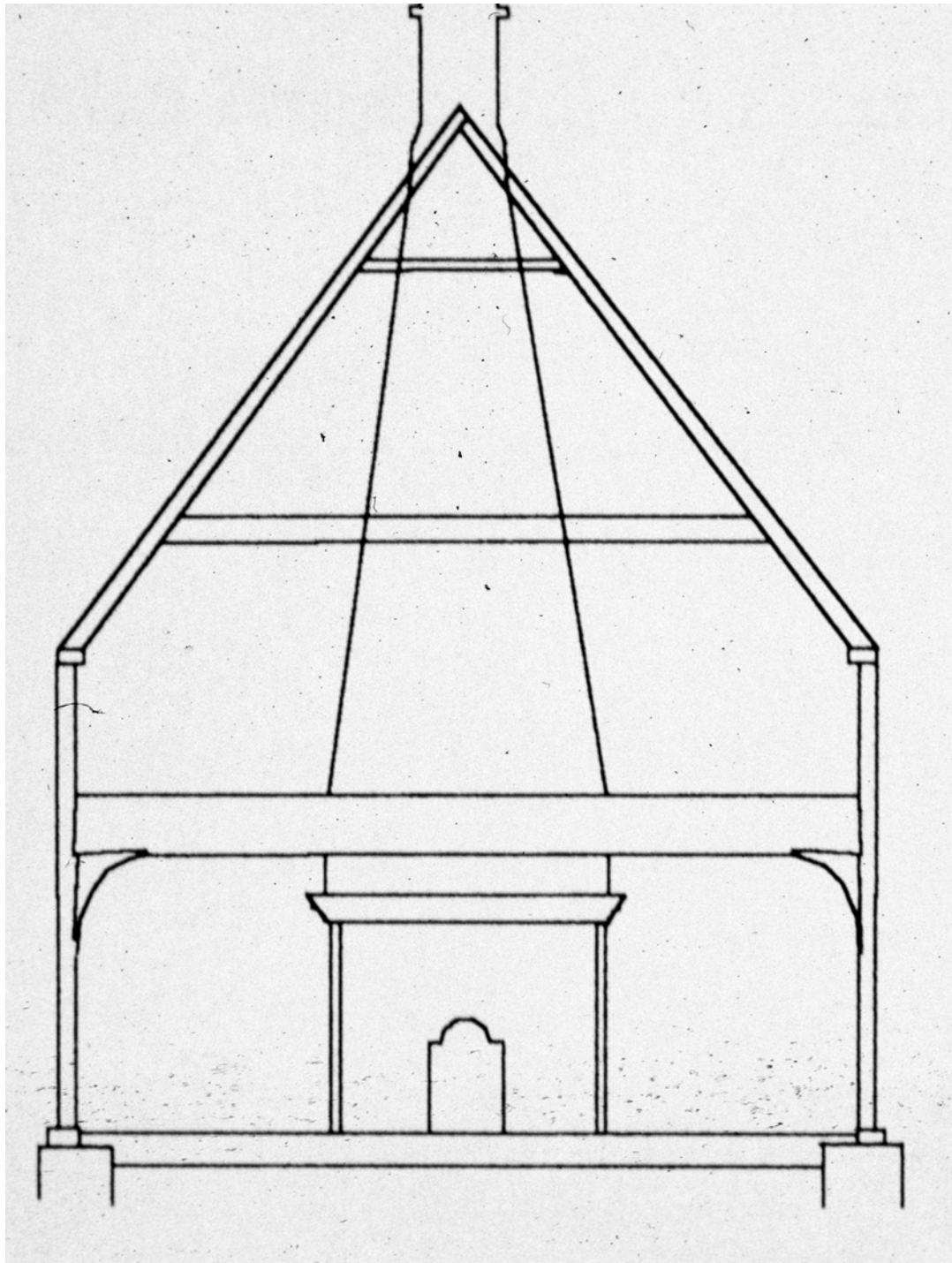
“Mousetooth Bond” on parapet gable, not stepped





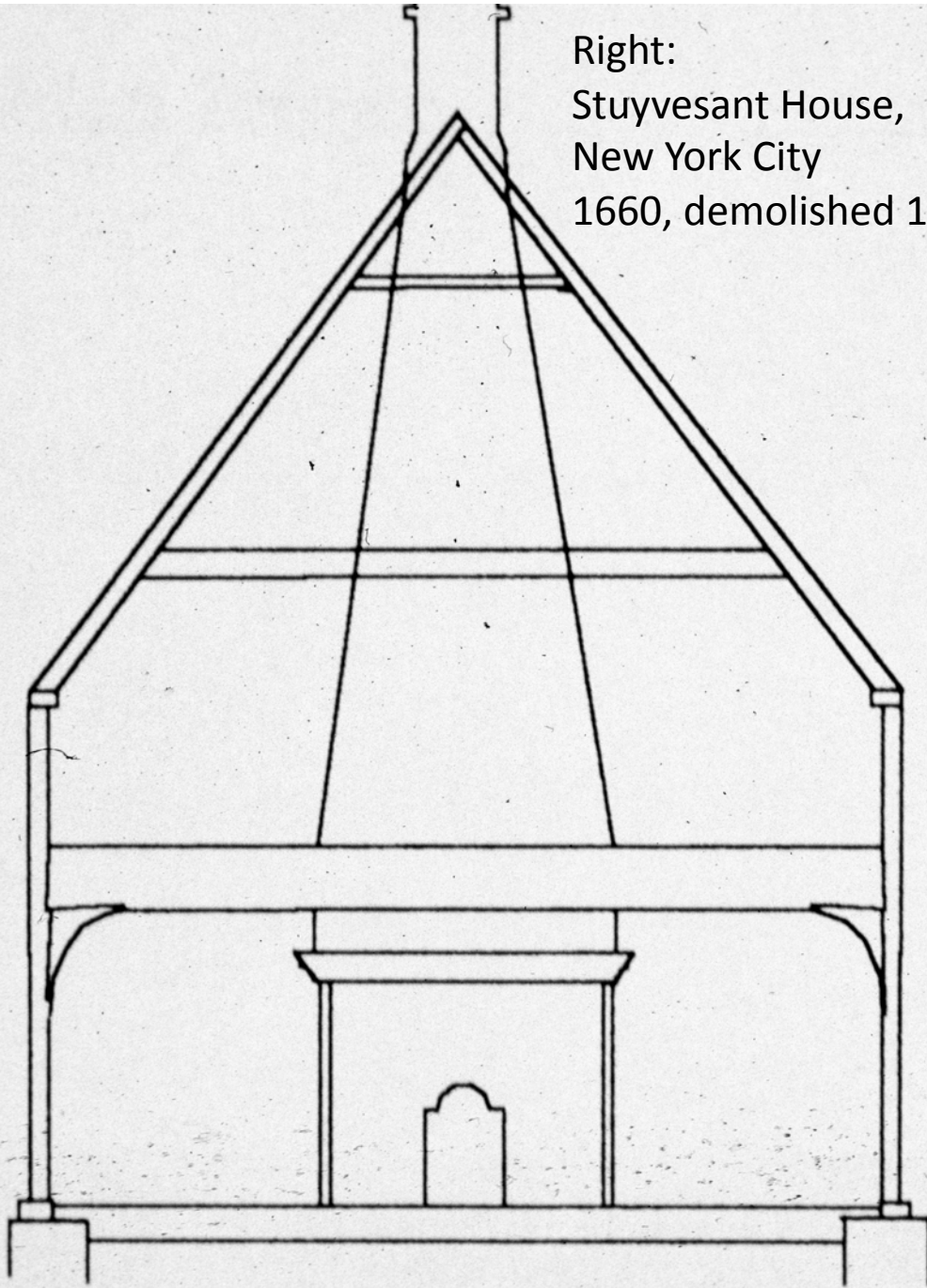
“Anchor Balkan” or “H-Bent” Framing system



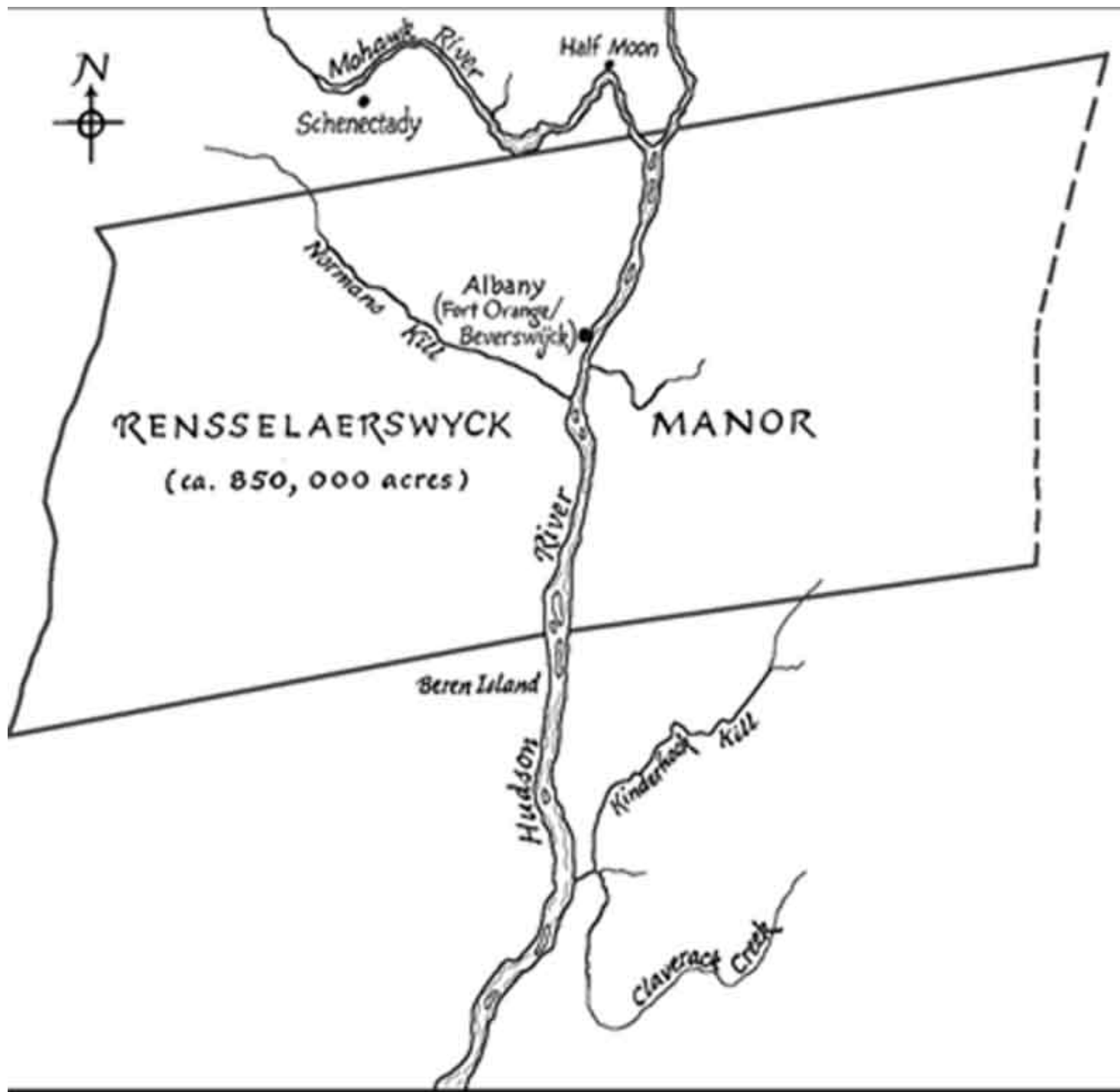




Right:  
Stuyvesant House,  
New York City  
1660, demolished 1860







## Patroonships

Patroonship of  
Rensselaerswyck,  
150 miles north of  
New York City





Peter Bronck House, Cossack, NY  
1663 – original structural stone  
1738 – H-Bent frame with brick veneer





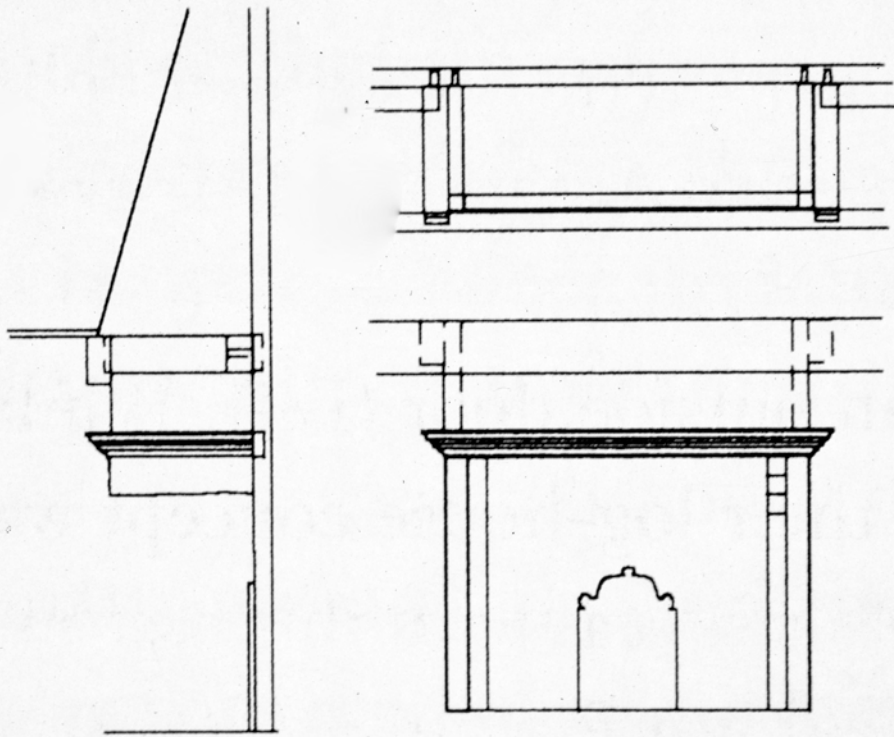


Luykas Van Alen House, Kinderhook, NY, 1737, Dutch





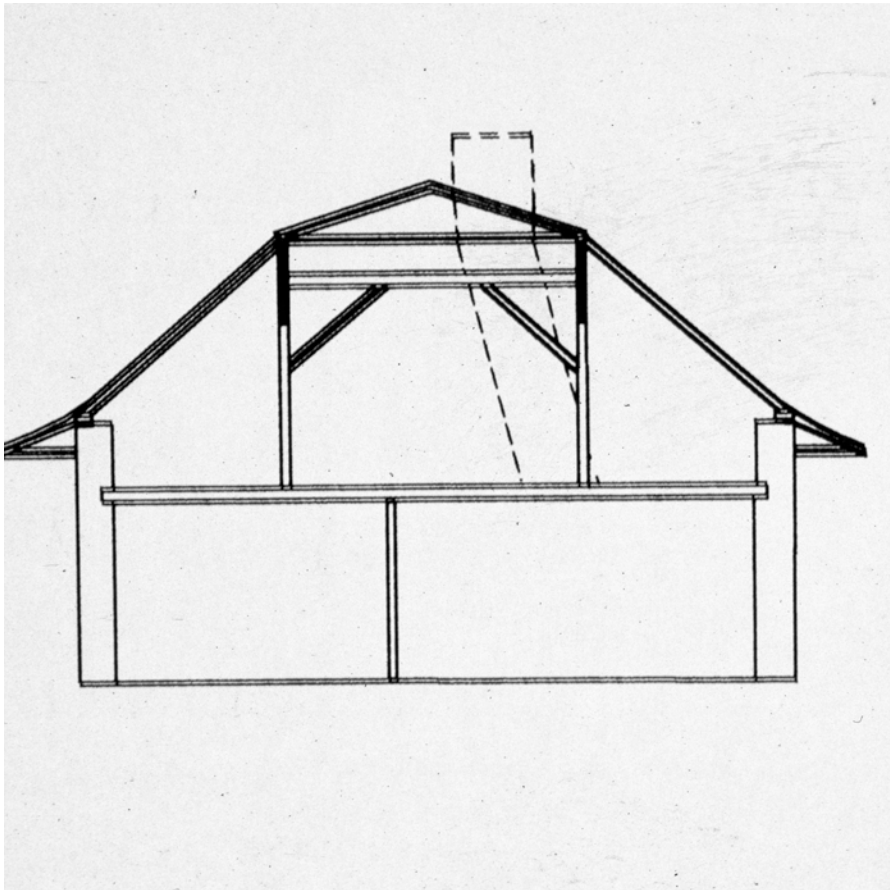




Jambless fireplace







Gambrel Roof  
English, adopted by Dutch settlers







John Teller House, Schenectady, NY, 1740



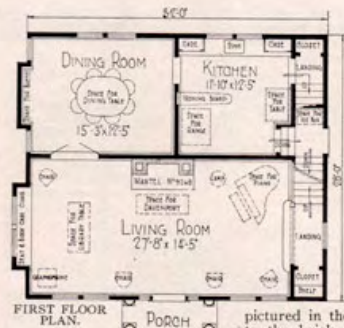
## SEVEN MODERN ROOMS



At the price quoted we will furnish all the material to build this seven-room Colonial house, consisting of mill work, lumber, lath, Oriental shingles, porch ceiling, flooring, siding, finishing lumber, building paper, eaves trough, down spout, sash weights, tile, wardrobes, bookcase, hardware, kitchen cabinet, medicine case, mantel and painting material. We guarantee enough material to build this house. Price does not include cement, brick or plaster.

**Honor Bill**  
The  
*Martha Washington*  
No. 13080 "Already Cut" and "Fitted."  
**\$3,764<sup>00</sup>**

See Description of "Honor Bill" Houses on Page 7.



FIRST FLOOR PLAN.

THE "MARTHA WASHINGTON" is a design that will delight lovers of the real Colonial type of architecture. The entrance with its Colonial columns, Colonial door and side lights is most inviting and attractive, flanked by the double Colonial windows on either side. The view to the visitor or passerby presents a vision of hospitality and brightness that is characteristic of many famous historical homes. The second story front is in keeping with the balance of the exterior. The pure white wide siding is set off to the best possible advantage by the sea green Oriental shingles and Colonial chimney. Fancy this commodious home set in a landscape as



SECOND FLOOR PLAN.

pictured in the illustration. The red tile approach to the brick porch ornamented with flowers and shrubbery will often prompt you to stand and admire this beautiful creation of the architect's skill.

Many a time, too, you will be glad to rest on the rustic seat during the cool summer evening hours and congratulate yourself upon the selection of a home that reflects refined taste, solid comfort, real economy and good judgment. Seat furnished for \$6.00 extra.



Side and Front View of the Martha Washington.

**First Floor** Opening the Colonial door you enter a spacious living room extending the entire width of the house. Directly in front you find a massive brick mantel. To your left is a double bay window with seat and bookcase. To the right an artistic open stairway to the second floor. In this big room you have ample space for a large piano, phonograph, davenport, library table, plenty of chairs, reading lamp and any other articles of furniture you deem necessary for your own comfort and the entertainment of your guests. This room is so well lighted and ventilated that an outside porch is really unnecessary. To the left of the brick mantel is a pair of French doors leading into a fair size dining room lighted by a pair of double windows; also the two windows to the left form a bay in which may be placed a commodious buffet.

(Description continued on the opposite page.)





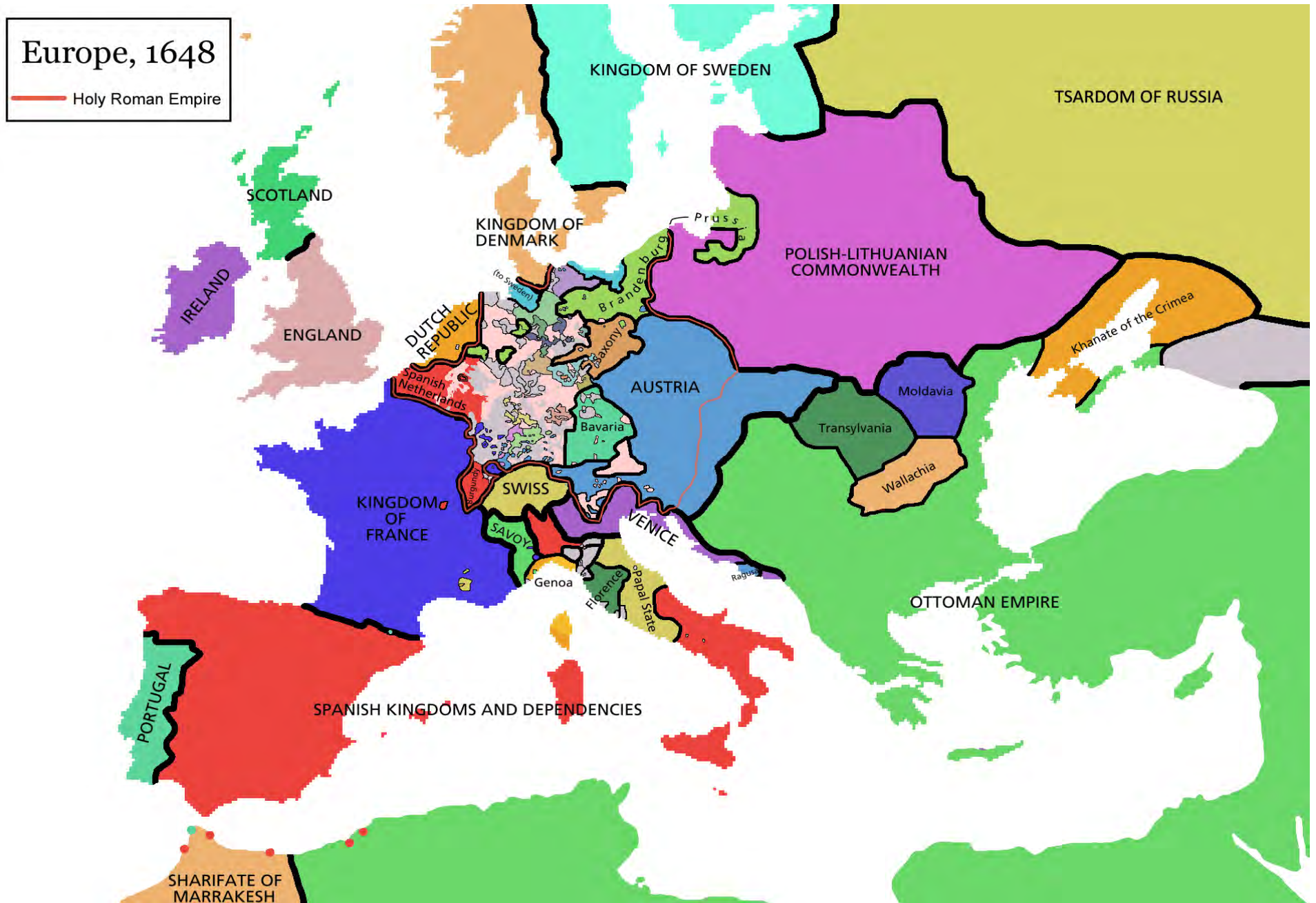
# German Colonial Architecture



William Penn (1644 - 1718)







Europe at the end of the Thirty Years War



**The Palatinate,**  
which includes the  
areas of the Palatine  
and the Rhineland







Hans Herr House, Lancaster County, PA, 1719



Werkzeugkammer [tool room]  
Arbeitsraum [work room]  
Speicher [storage room]

Kammer

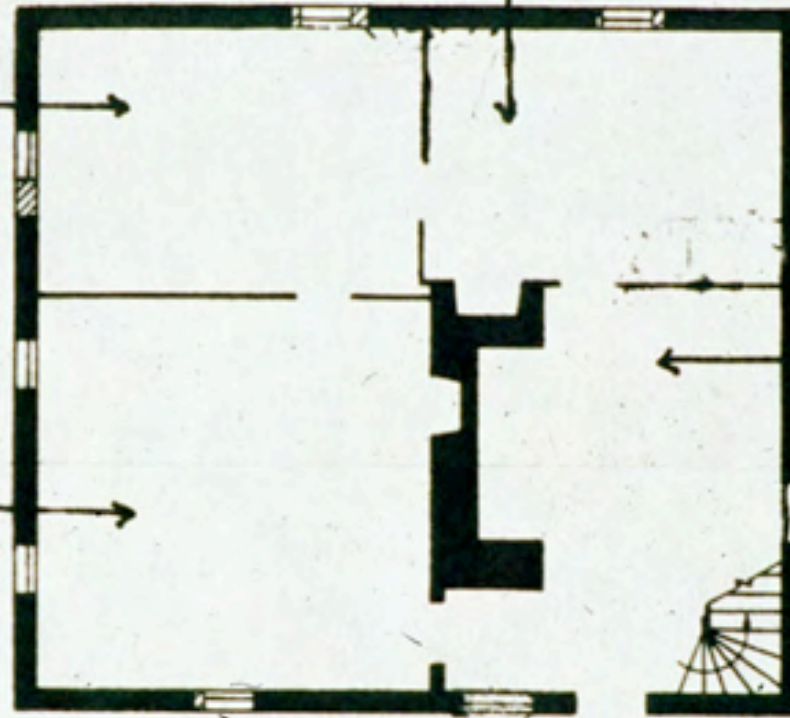
Stube

Küche

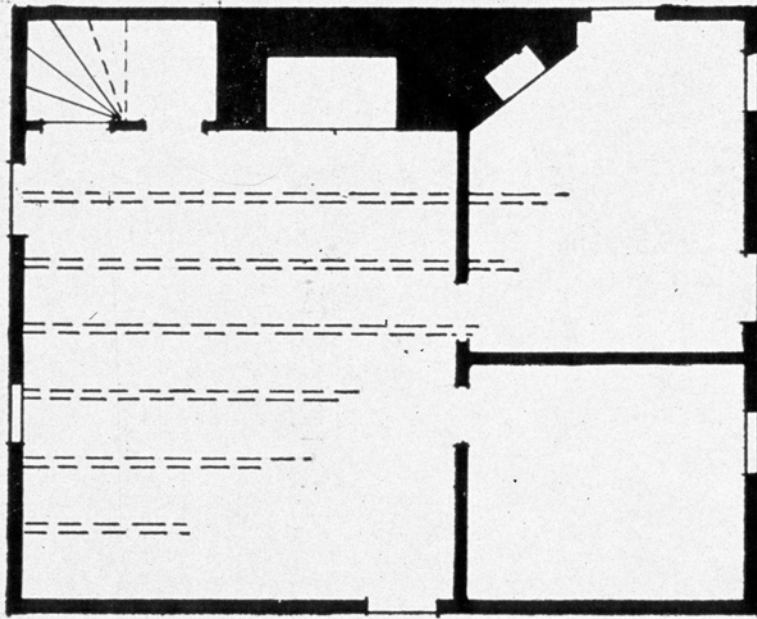
0 5 10 15 ft



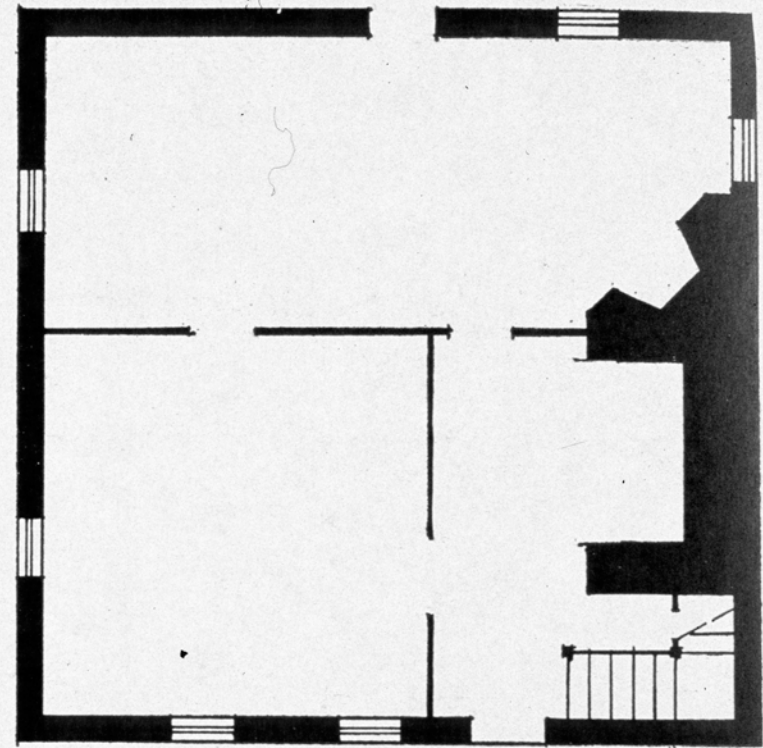
Flurküchenhaus [corridor-kitchen plan]



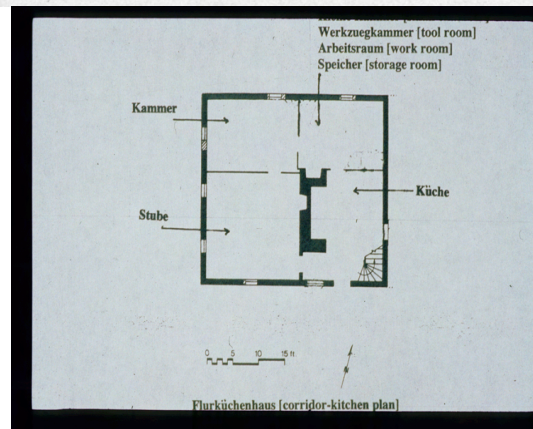




Nixon Tavern, Fairchance, Pennsylvania  
The corner fireplace indicates Swedish influence in a dominantly German area.

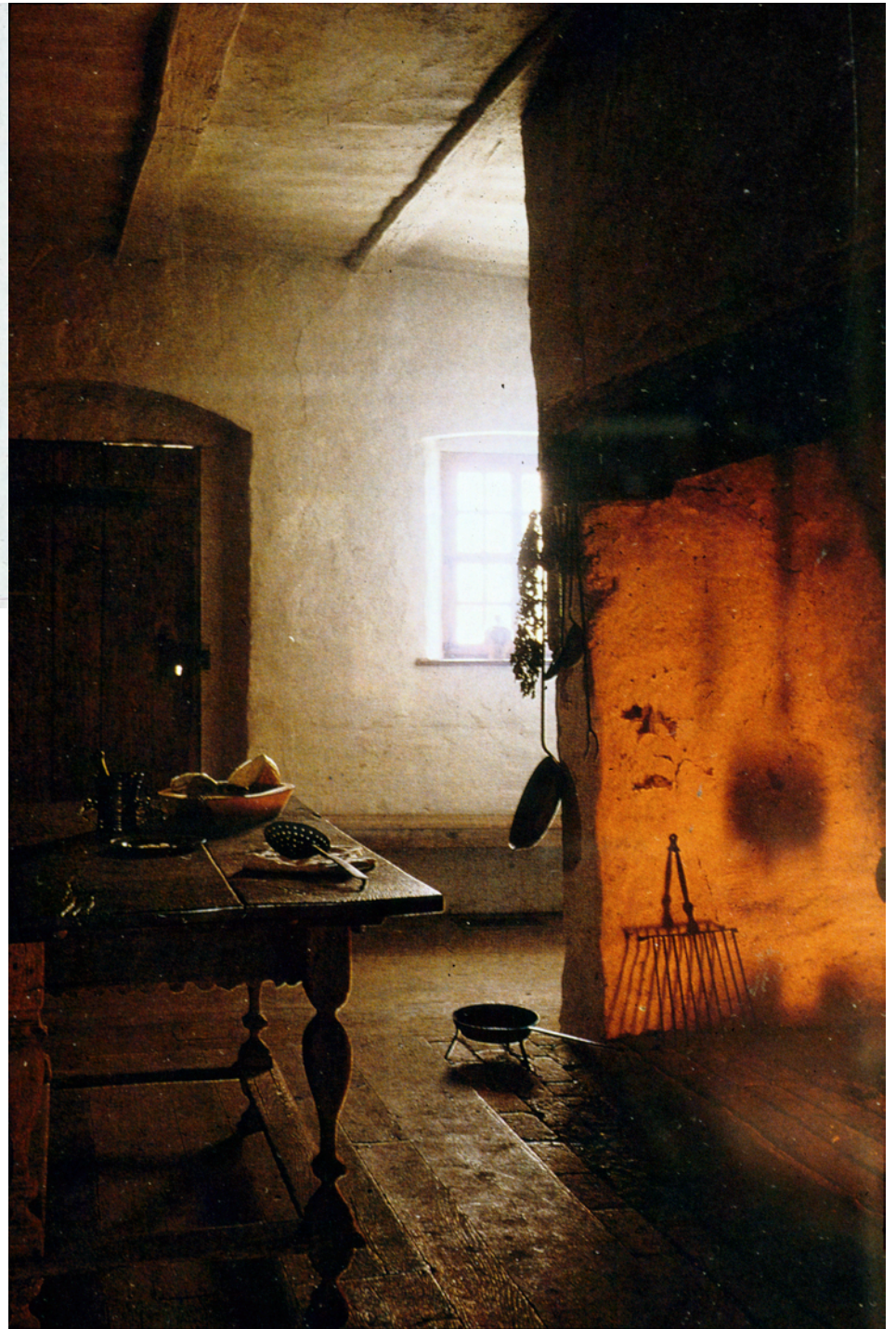
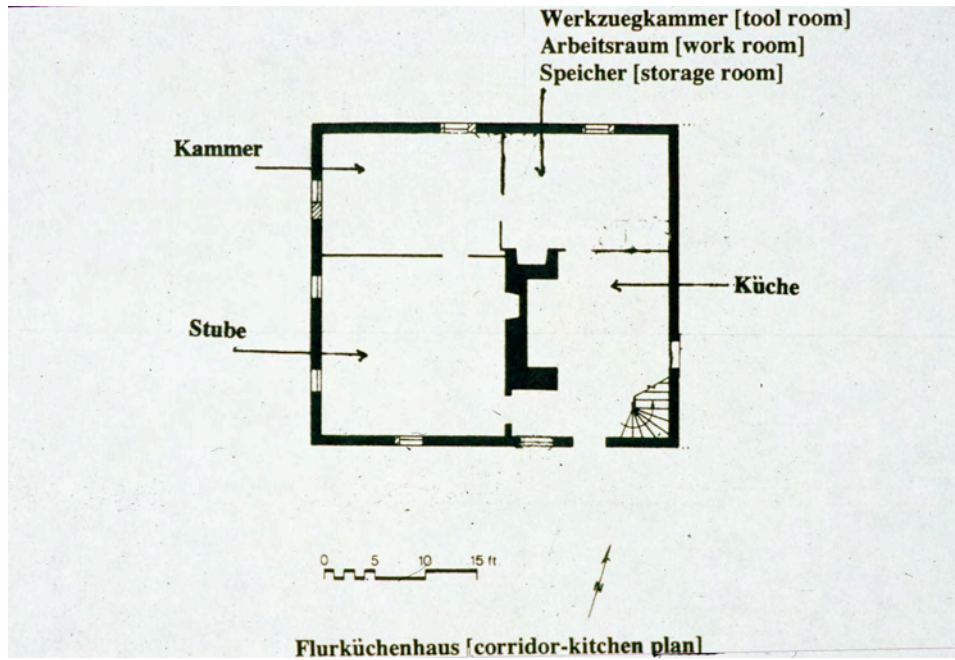


Mackey House, Linglestown, Pennsylvania  
An example of the blending of European influences on the Pennsylvania frontier.

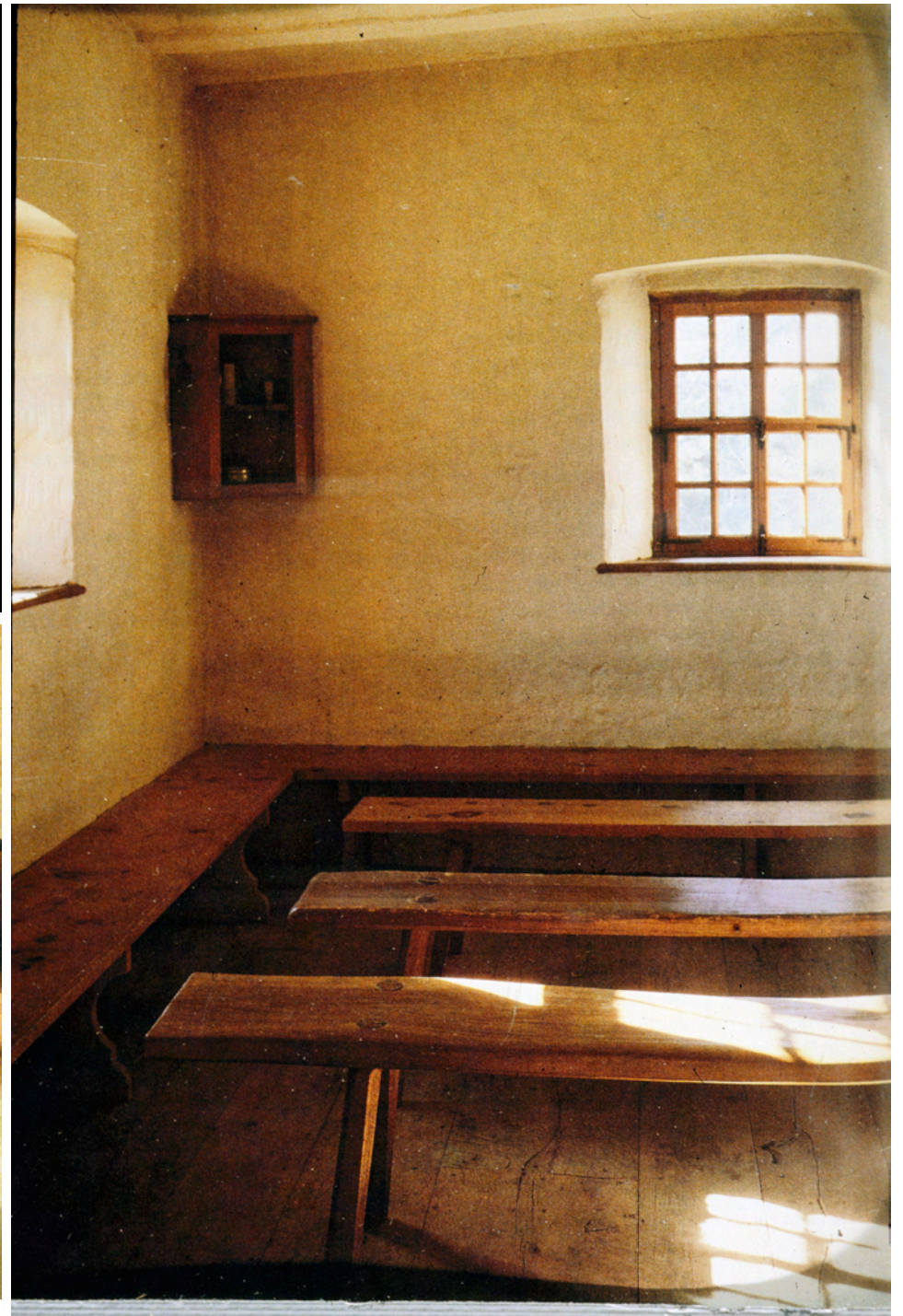
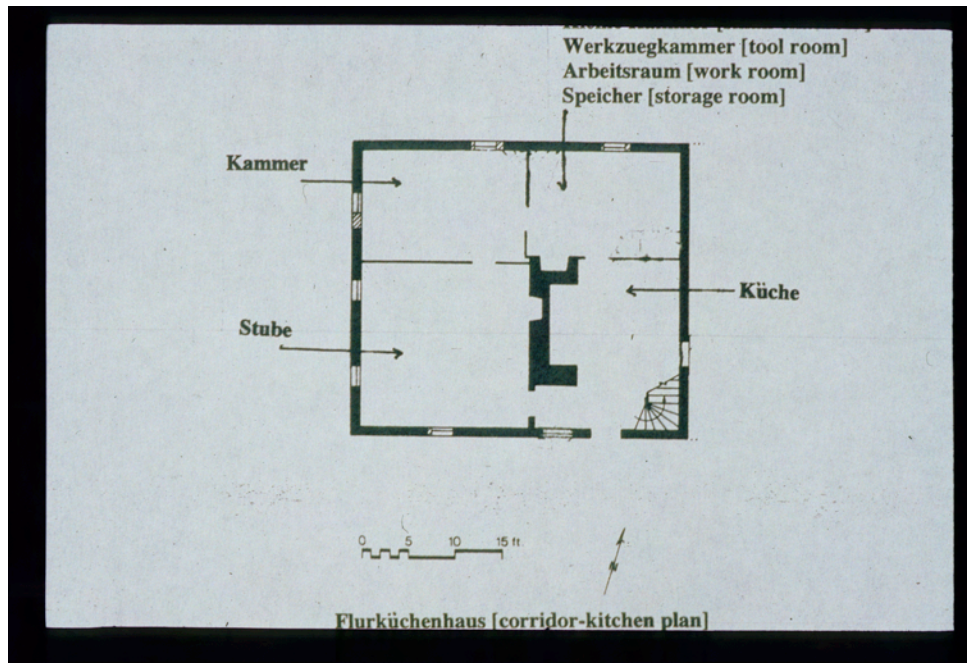


The "Penn Plan", very similar to the German vernacular

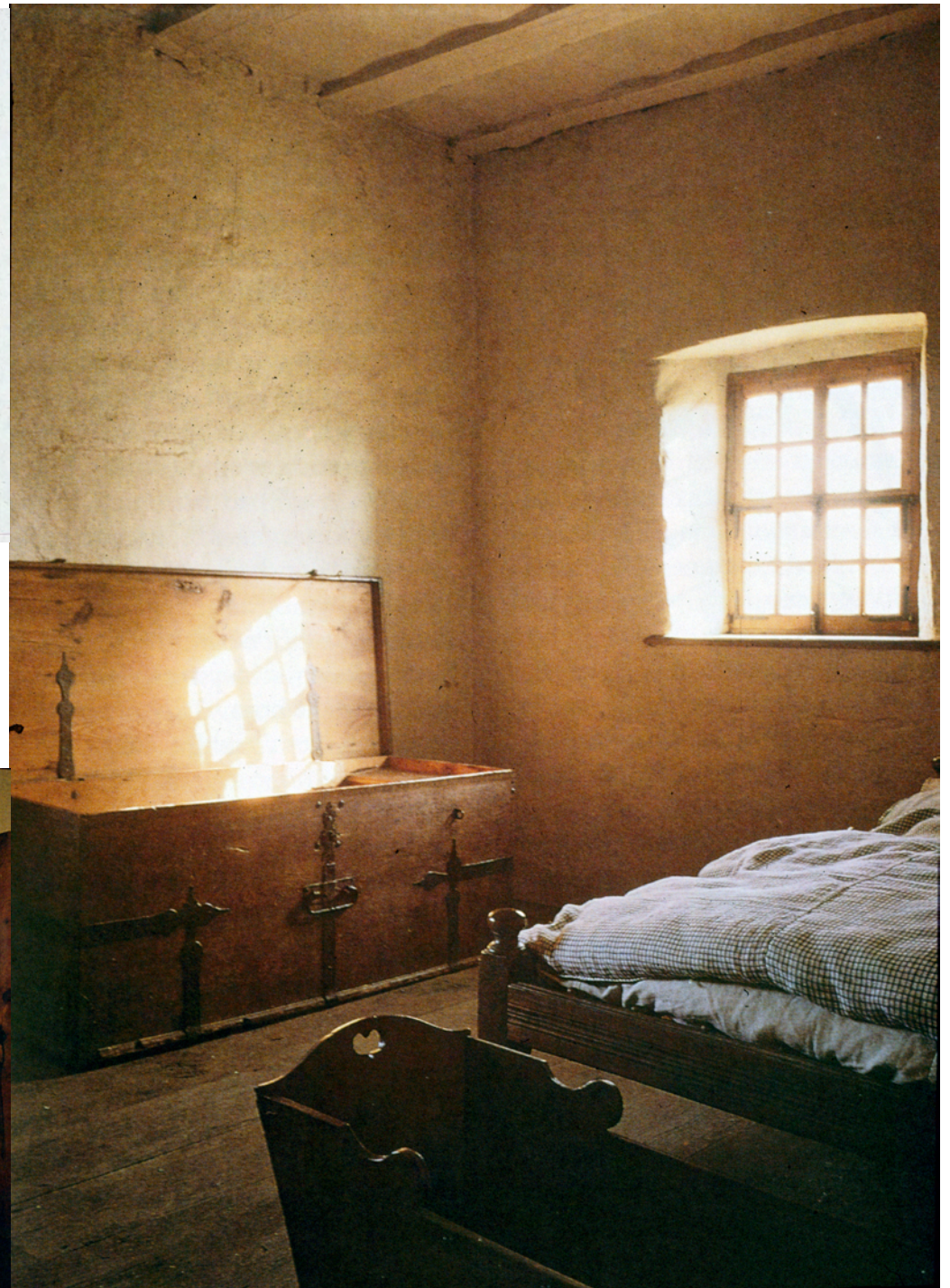
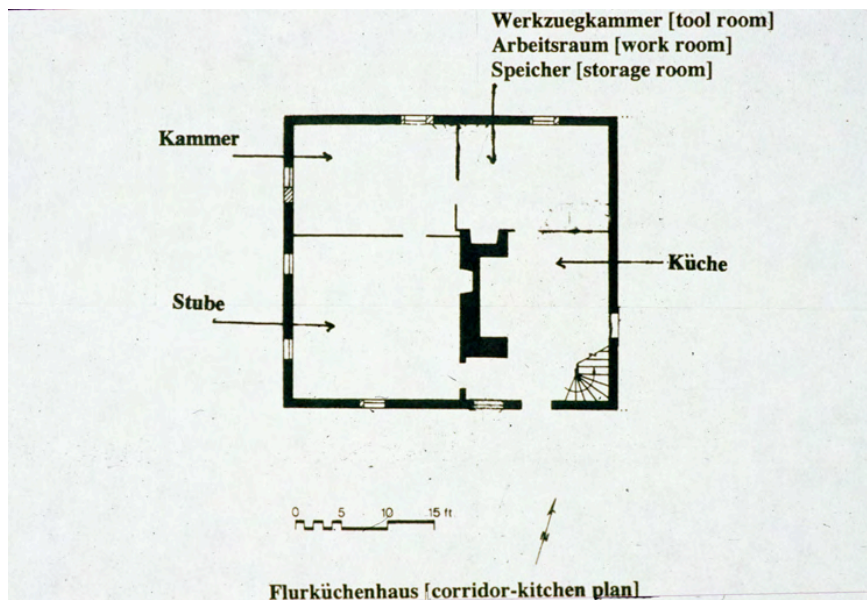




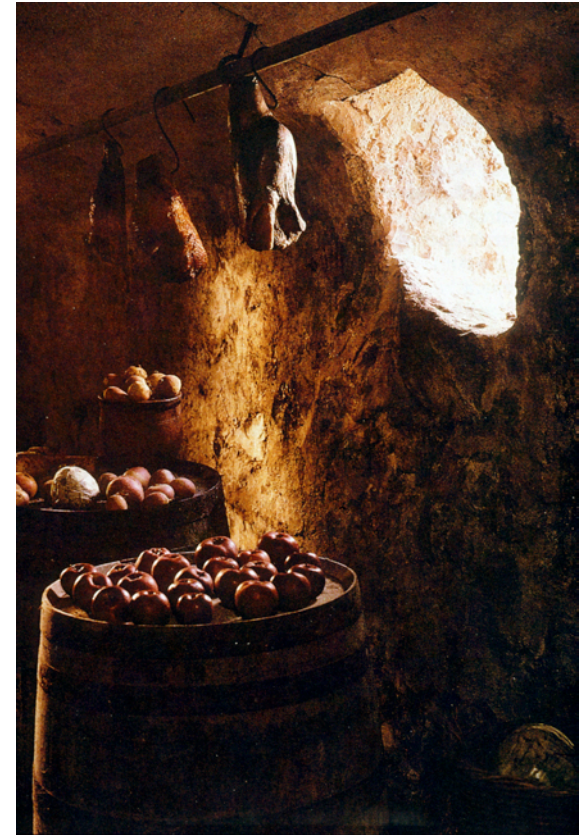








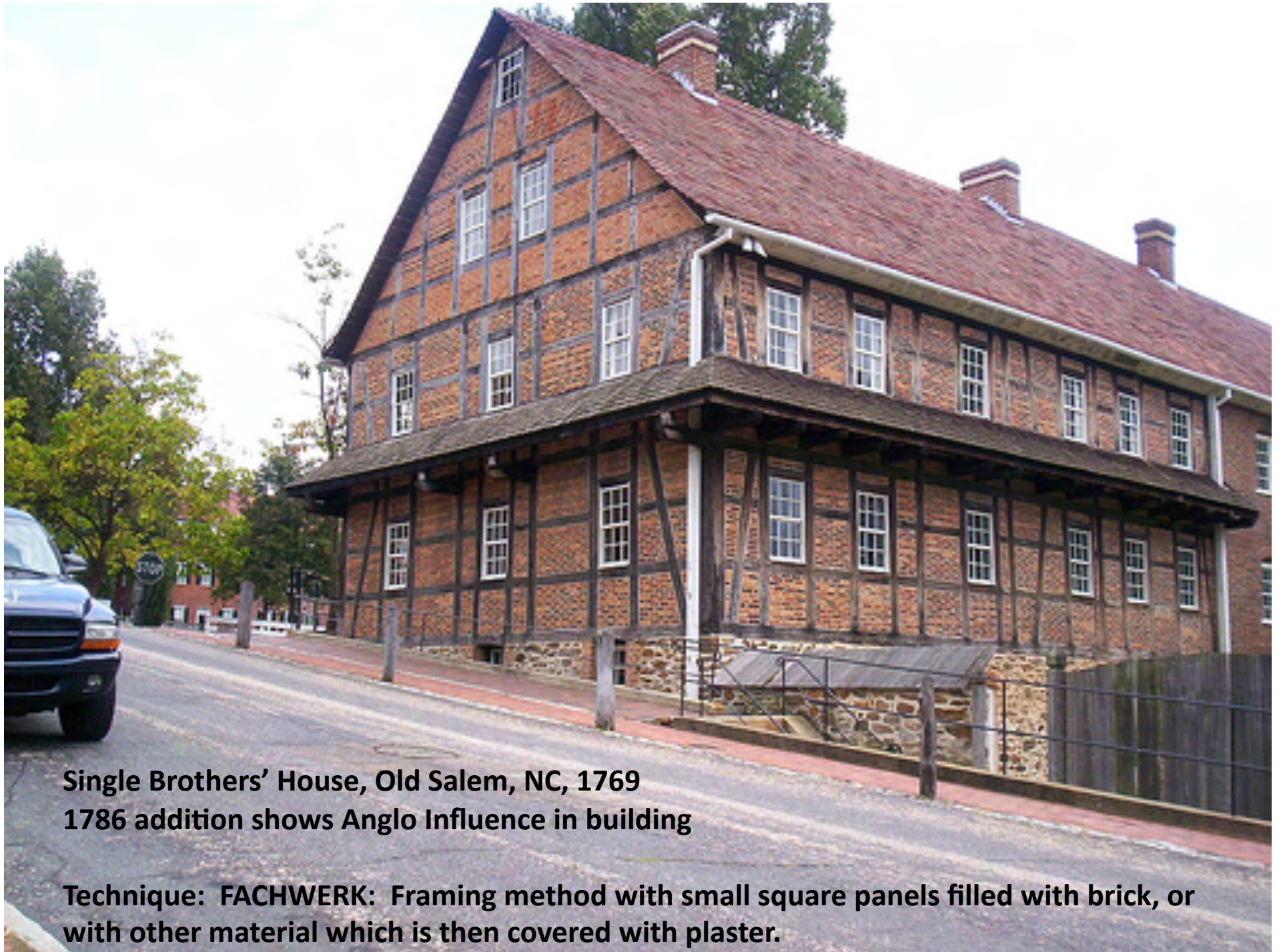












**Single Brothers' House, Old Salem, NC, 1769**  
**1786 addition shows Anglo Influence in building**

**Technique: FACHWERK: Framing method with small square panels filled with brick, or with other material which is then covered with plaster.**